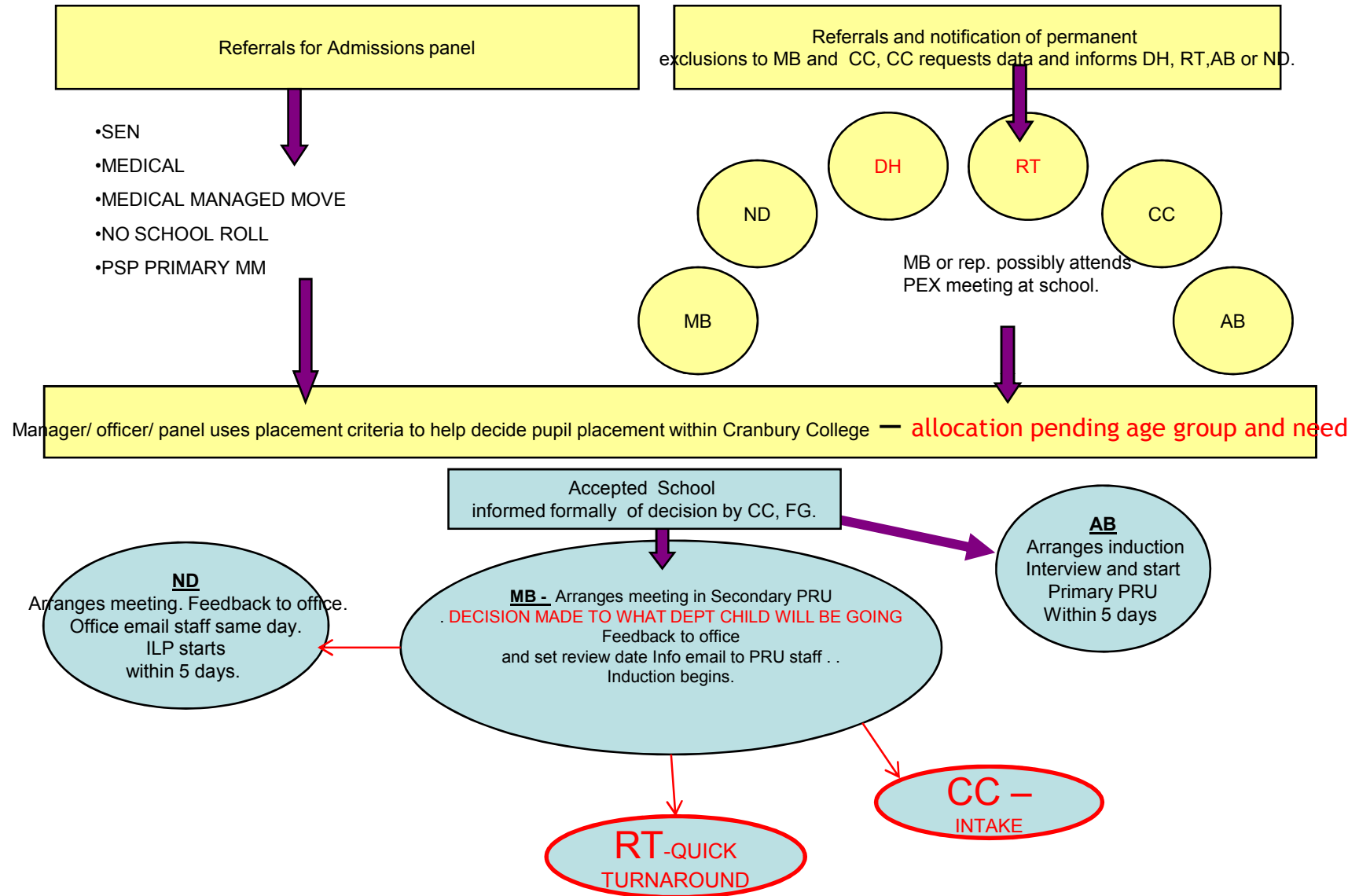
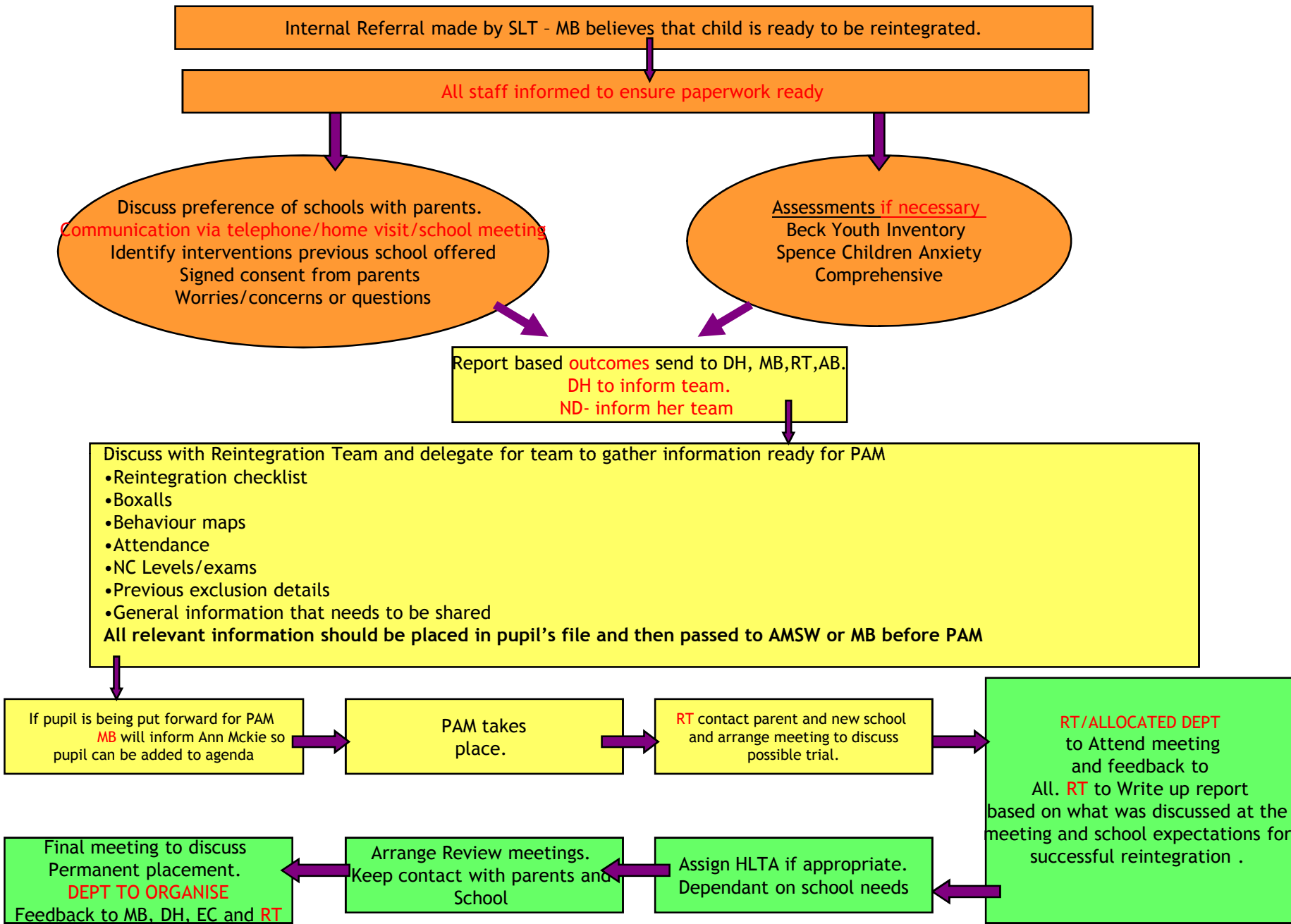
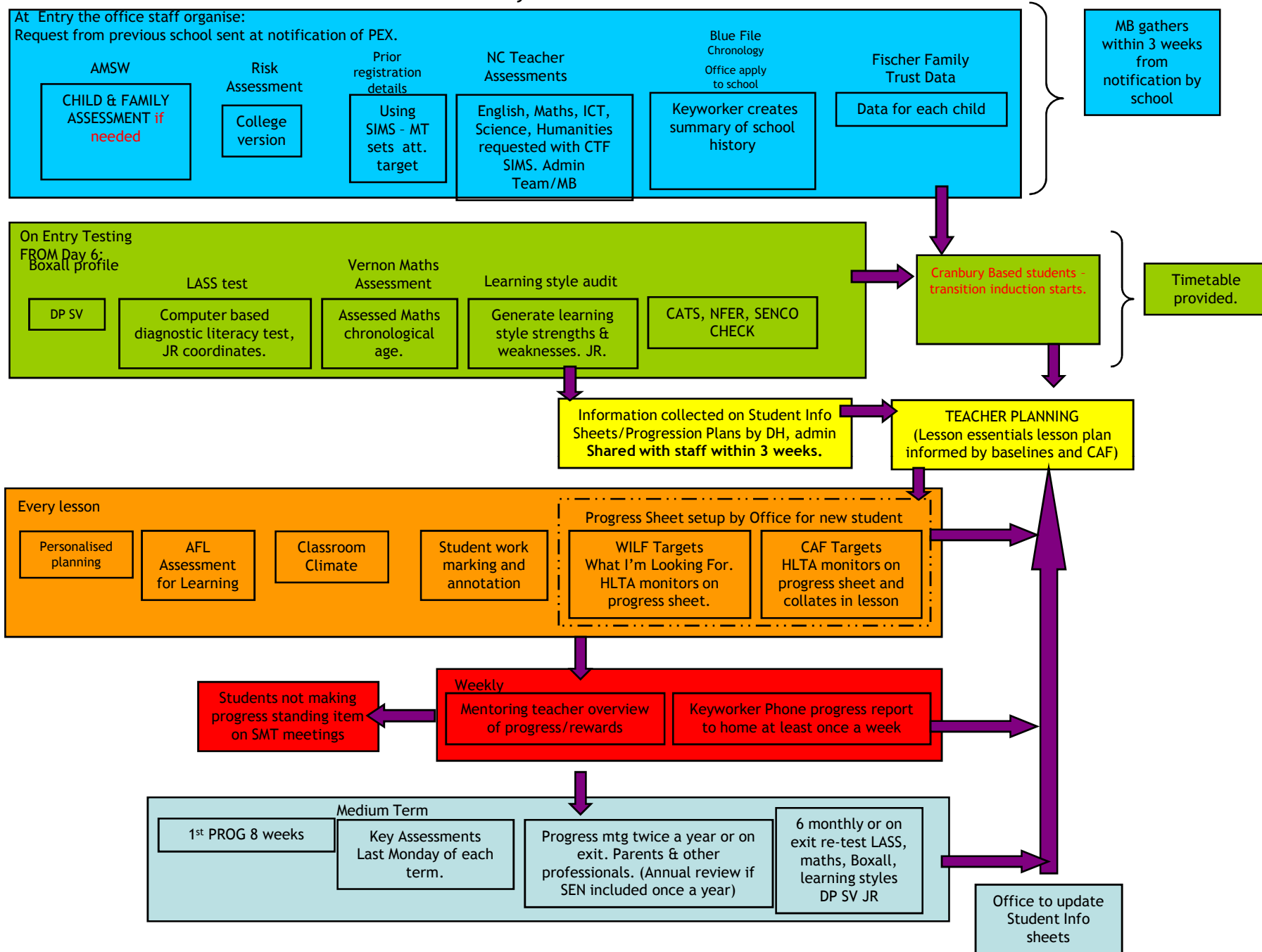


Entry and Assessment Systems Cranbury College

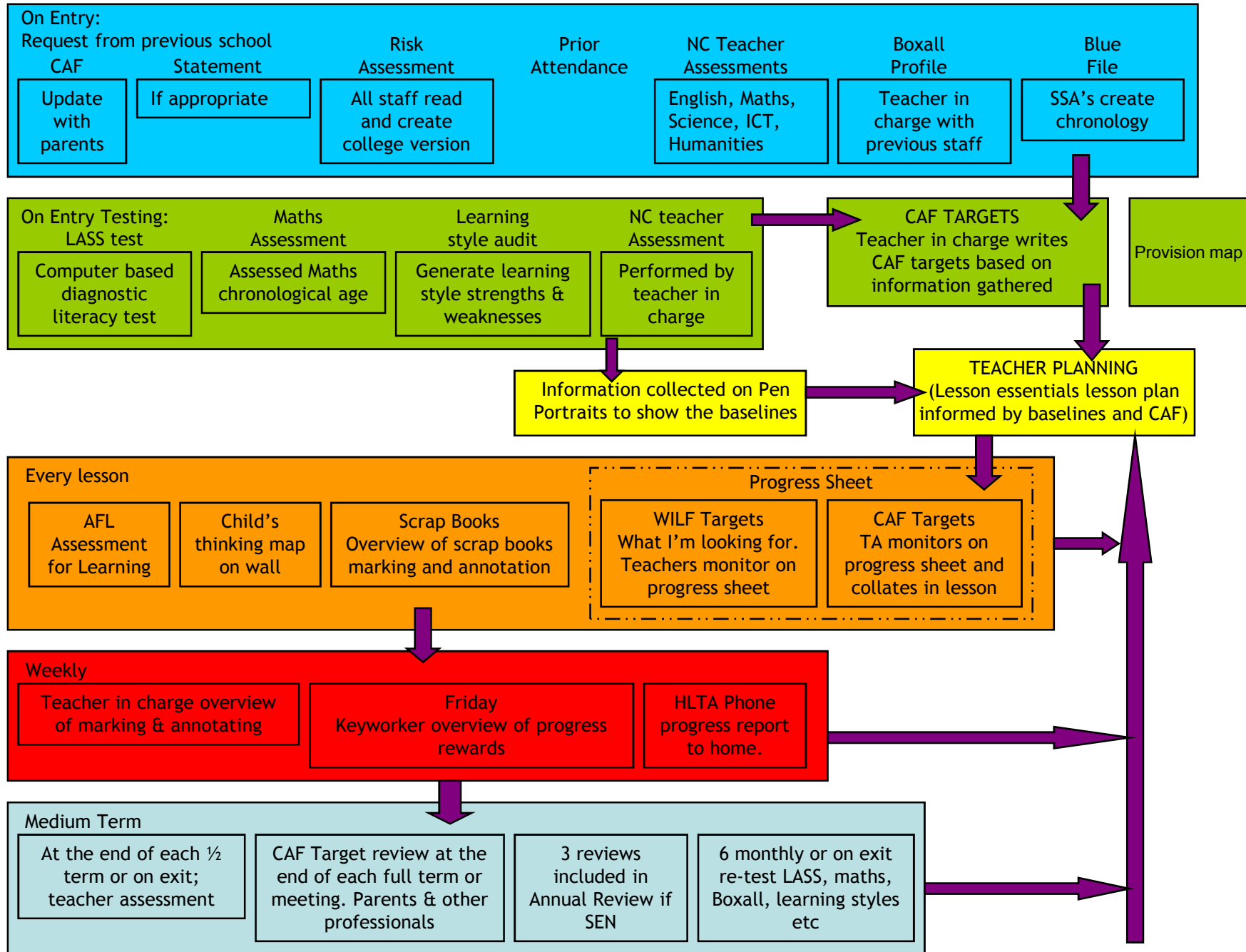




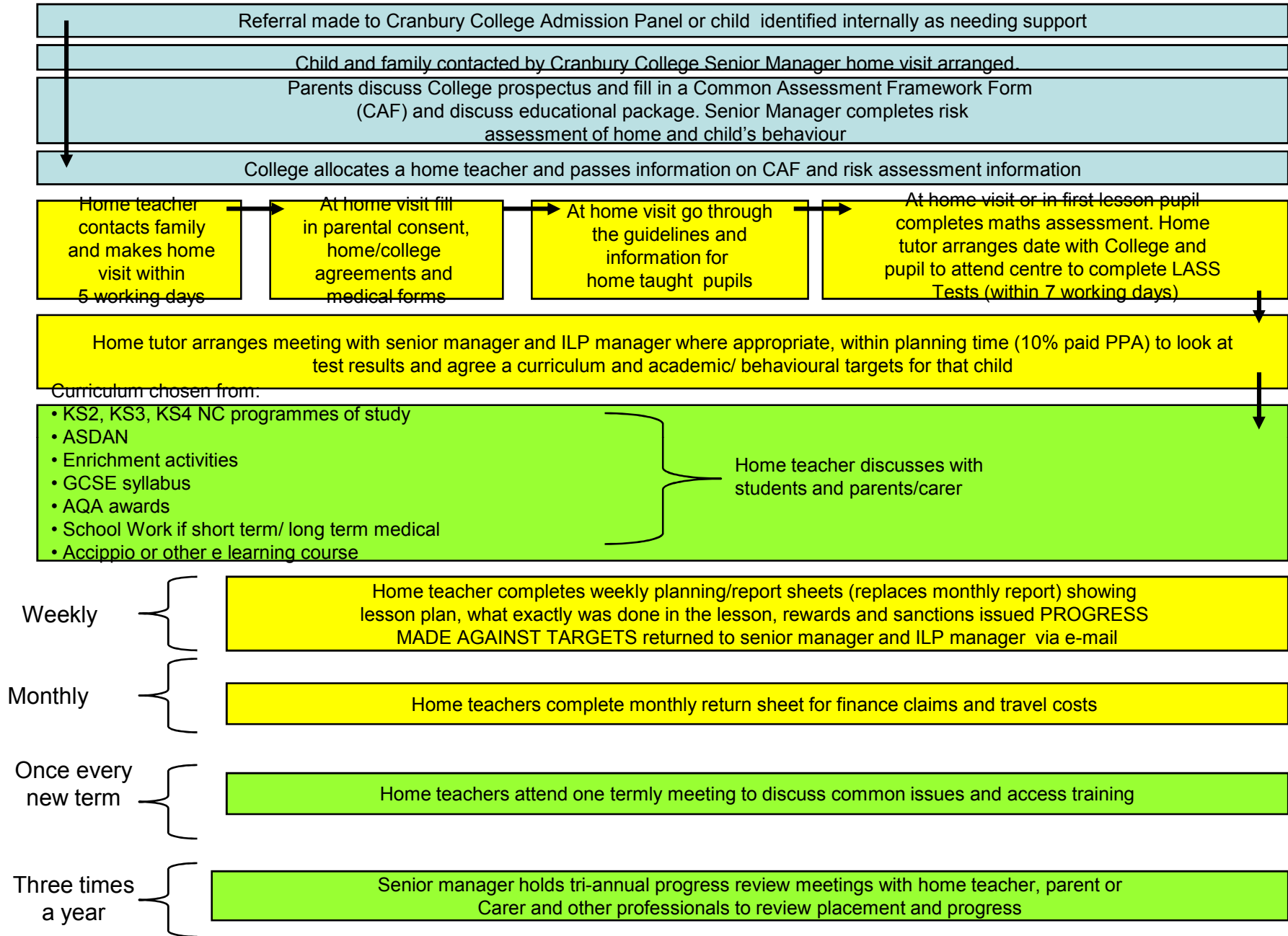
Secondary PRU Assessment Overview



Primary Assessment Overview



Individual Learning Programme Flow Chart of systems and tasks



Referral made to Cranbury College Admission Panel or child identified internally as needing support

Child and family contacted by Cranbury College Senior Manager home visit arranged

Parents discuss College prospectus and fill in a Common Assessment Framework Form (CAF) and discuss educational package. Senior Manager completes risk assessment of home and child's behaviour

College allocates a home teacher and passes information on CAF and risk assessment information

Home teacher contacts family and makes home visit within 5 working days

At home visit fill in parental consent, home/college agreements and medical forms

At home visit go through the guidelines and information for home taught pupils

At home visit or in first lesson pupil completes maths assessment. Home tutor arranges date with College and pupil to attend centre to complete LASS Tests (within 7 working days)

Home tutor arranges meeting with senior manager and ILP manager where appropriate, within planning time (10% paid PPA) to look at test results and agree a curriculum and academic/ behavioural targets for that child

Curriculum chosen from:

- KS2, KS3, KS4 NC programmes of study
- ASDAN
- Enrichment activities
- GCSE syllabus
- AQA awards
- School Work if short term/ long term medical
- Accippio or other e learning course

Home teacher discusses with students and parents/carer

Weekly Home teacher completes weekly planning/report sheets (replaces monthly report) showing lesson plan, what exactly was done in the lesson, rewards and sanctions issued PROGRESS MADE AGAINST TARGETS returned to senior manager and ILP manager via e-mail

Monthly Home teachers complete monthly return sheet for finance claims and travel costs

Once every new term Home teachers attend one termly meeting to discuss common issues and access training

Three times a year Senior manager holds tri-annual progress review meetings with home teacher, parent or Carer and other professionals to review placement and progress

Placement Criteria Cranbury College

Secondary PRU	Individual learning programme	Primary PRU
<p>Place available. PEX. Medical phobic able to work in groups/ PRU environment. Statement awaiting placement by SEN. No school roll. Safeguarding concerns if not attending 25 hours on site. 25 hours education a condition of court order. Need to improve group/ socialisation skills in order to make progress. No major issues with other child already attending (court orders, sibling, co-defendant, victim). KS3 reintegration potential.</p> <p>90% attendance on ILP achieving 90% of WILFS in lessons successful trial over six weeks. Manageable risk to group i.e. risk reduction activities are practicable and does not effect others' rights to learning.</p>	<p>Referral from PAM or Panel</p> <p>No school roll. PRU full. Medical issue requires limited hours. Mental health/ Phobic issue unable to work in groups. Major issue with existing pupil (court orders, sibling, co-defendant, victim).</p> <p>Exclusion from PRU. Persistent difficulties meeting PRU code of conduct.</p> <p>Health and safety risk to staff and other student in groups (must be sanctioned by Health and Safety dept)</p> <hr/> <p>Needs individual curriculum. Not School. Court ordered Home Education.</p>	<p>Place available. Awaiting ESBD Special School. Managed Move following PSP to avoid PEX. No school roll. No major issues with other child already attending (court orders, sibling, co-defendant, victim). Manageable risk to group i.e. risk reduction activities are practicable and does not effect others rights to learning. Undergoing reintegration to a school.</p>